

**AM-MANUFACTURING LLC. USA**

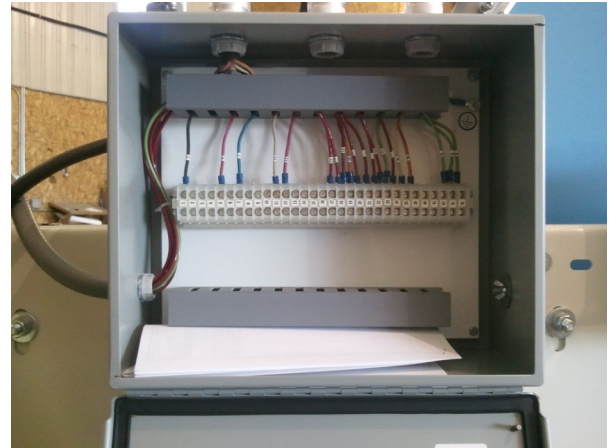
Call or visit our website today for a quote!  
231-437-3377 / [www.am-mfgllc.com](http://www.am-mfgllc.com)



## **LOADING SPOUT POSITIONER**



The Hopper seals of the loading spout positioner are self adjusting and come preset in a replaceable cartridge assemble from the factory. The Hopper Assembly is supported by V-Groove CAM followers riding in an angle track which is bolted to the inside of the Positioners Main Frame. AM Manufacturing uses a Dual Chain driven technology with external motor and reducer set up.



**Spout Positioner is shipped completely assembled and tested at the factory**



**Spout Positioner**

**AM-MANUFACTURING**

6300 US HWY 31 South  
Charlevoix, MI 49720

Phone: 231-437-3377  
Fax: 888-445-2995  
E-mail: [sales@am-mfgllc.com](mailto:sales@am-mfgllc.com)